



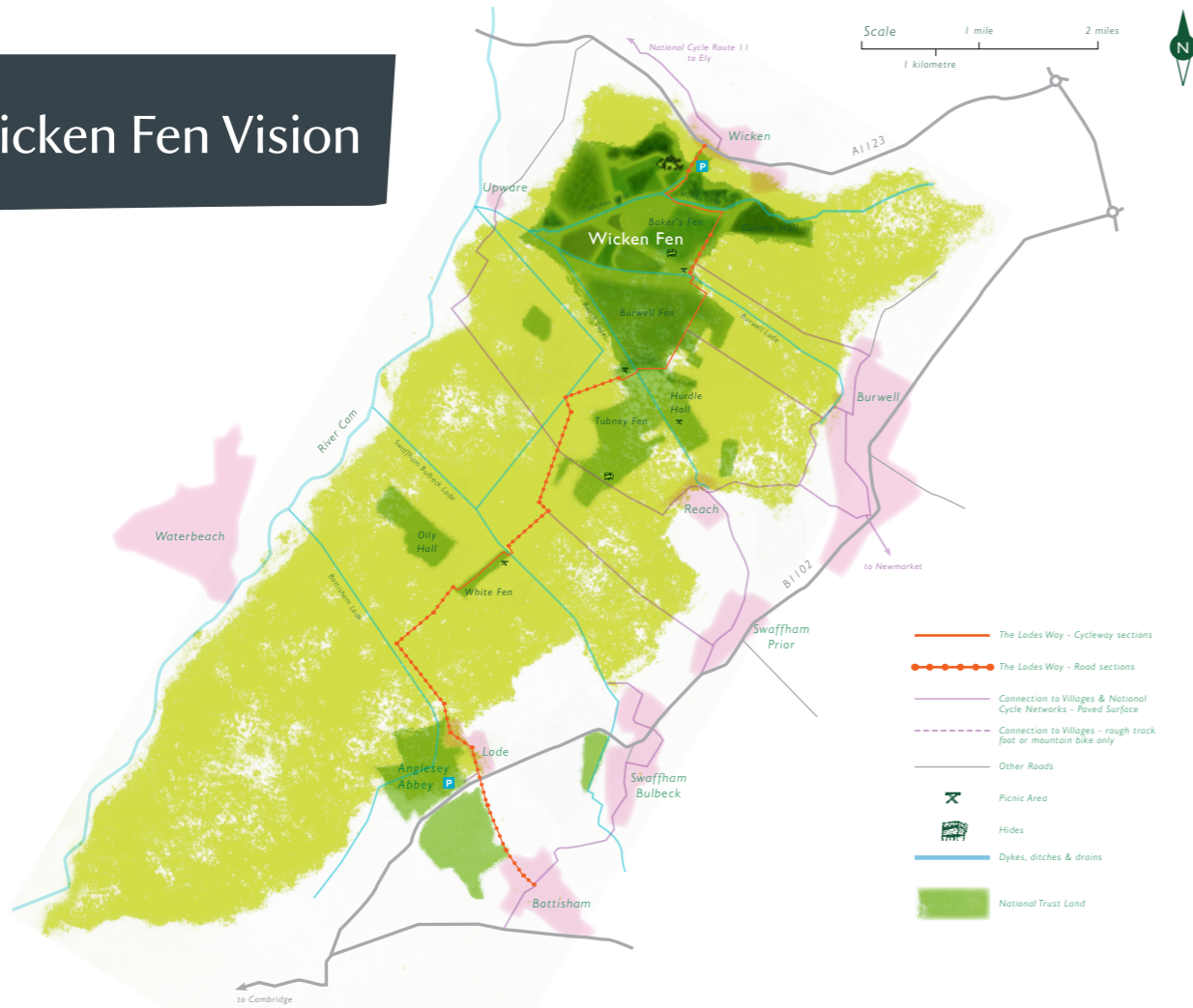
National
Trust

Wicken Fen

Vision

Creating a 53 square kilometre
landscape for wildlife and
people in Cambridgeshire

Wicken Fen Vision



In 1899 the first two acres of Wicken Fen were purchased by the National Trust for £10. Since then, we've been looking after this special place which is home to more than 9,000 plants and animals.

Less than 1% of original fen survives in East Anglia, of which Wicken Fen is a fragment. Having grown to 358 hectares, the nature reserve was too small and isolated to guarantee the survival of all of its rare and numerous species, and under pressure from the increasing numbers of people seeking its peace and tranquillity. Wicken Fen needed an exciting and pioneering plan to take it into the next millennium.

Launched in 1999, the Wicken Fen Vision is a 100 year plan to create a diverse landscape for wildlife and people over an area of 53 square kilometres; an historic landscape that will provide a space to breathe, think and explore for the modern world.

After 20 years the need for the Vision is greater than ever before with demands on our environment continuing to increase. The Wicken Fen Vision will deliver on a landscape scale to give nature the space it needs. It will continue to expand to create a healthy natural and beautiful environment that is bigger, better and more joined for both wildlife and people.

The Wicken Fen Vision

By 2099, we'll increase the nature reserve around Wicken Fen to create a diverse landscape for wildlife and people that extends towards Cambridge over an area of 53 square kilometres.

The Vision landscape will evolve a mosaic of habitats for a wide variety of abundant wildlife. Restoring natural processes, careful management of water and grazing regimes will allow sustainable land management into the future.



People will enjoy access and recreation opportunities across a beautiful, tranquil wilderness, with opportunities for volunteering, education and interpretation. Local communities will be inspired to care for and get involved with the landscape.



We will share our experiences to influence policy development, engage the scientific community and inspire a wider audience of partners, stakeholders and supporters.



We will stimulate a sustainable tourism economy, creating opportunities for jobs and local businesses that are consistent with our environmental objectives. We will work with partners to promote and protect the precious benefits ecosystems provide such as storing flood waters and mitigating global warming as a means to support a healthy sustainable environment.

Habitats and wildlife

To create an extensive landscape for wildlife that is sustainable and adaptable we will...

- extend the Wicken Fen nature reserve allowing wildlife to thrive and move across a Fen landscape
- acquire land in areas with potential for habitat creation and public access
- expand our grazing herds
- record and conserve important wildlife and landscape features



Grazing

Grazing animals are essential to influence the developing vegetation in the Fen landscape. At Wicken Fen, family groups of Konik ponies and Highland cattle range freely over large areas and live on the land all year with minimal human interference.



People

To provide a beautiful natural environment for the enjoyment, learning and recreation of everyone we will...

- inspire and connect people with nature, conservation and the landscape
- deliver access and recreation opportunities that link with local communities
- provide opportunities for learning and volunteering
- protect the landscape and challenge decisions that may put our vision at risk



Lodes Way

The Lodes Way is an eight mile cycleway and footpath between Wicken Fen and Anglesey Abbey which forms part of the National Cycle Network route 11. Cyclists and walkers share the cycleway, and horse riders can use the grass track that runs alongside. The construction of the cycleway involved building two bridges across the Lode waterways.



Learning



To learn continually from our experience and communicate our findings from a wide audience we will...

- monitor our progress and share our understanding of landscape scale conservation
- contribute to research on climate change and ecosystem services
- use our findings to inform decision-makers
- communicate our research to tell our story to everyone



Victorian naturalists

Wicken Fen was a favourite destination in the 19th century with the rise in popularity of natural history in the Victorian era. Wicken villagers supplemented their income by guiding visitors to the best collecting spots. A close relationship with Cambridge University was established that continues to this day.



Sustainable economy

To stimulate a diverse and thriving local economy focussed on the natural environment we will...

- look at business activities sympathetic to the wildlife and landscape
- work in partnership to develop a sustainable tourist economy
- showcase ecosystem services
- protect the area's natural resources and reduce greenhouse gas emissions



Wicken Fen visitor centre

The Wicken Fen visitor centre welcomes over 65,000 visitors each year. The centre offers a wealth of opportunities for visitors to engage with and learn about the landscape. Hiring bicycles, guiding boat trips and running a 'back to basics' campsite are some of the ways we do this whilst at the same time generating income to support the conservation of Wicken Fen.



The first chapter of the Wicken Fen Vision

1999

Wicken Fen
Vision launched



446

hectares of land purchased



6 cranes
using
new
habitat



2 bridges
built



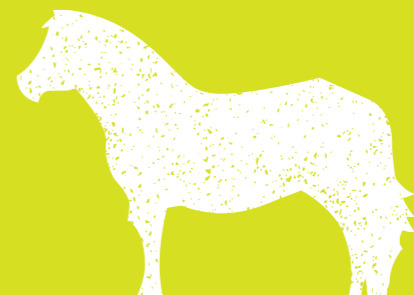
65,000

people to the visitor centre
each year (many more using
the access network)

Lodes Way
linking to
National
Cycle
Network

100

Konik ponies grazing



cycle hire opened



over 5000

wintering waterfowl using new habitat



48km

of public access created
or improved

'Back to basics'
campsite established



...the next chapter needs you!
See overleaf to find out how you can
be part of the Wicken Fen story!

We're writing the next chapter in the story of a landscape that has evolved over centuries. and we'd like you to be a part of this.

Walker, farmer, cyclist, horse rider or birdwatcher. Volunteer, National Trust member, visitor or supporter. Councillor, business owner, teacher or community leader.

Whoever you are, you're invited to be part of the Wicken Fen Vision.



Ways to keep in touch

   @WickenFenNT #WickenFen

Wicken Fen,
Lode Lane, Wicken, Cambridgeshire, CB7 5XP
Telephone: 01353 720274

Email: wickenfen@nationaltrust.org.uk

www.nationaltrust.org.uk/wicken-fen-nature-reserve